



## Synonym

KLK1, Kallikrein-1, KLKR, Klk6

## Source

Human Kallikrein 1 (25-262) Protein, His Tag (KL1-H52H4) is expressed from human 293 cells (HEK293). It contains AA Ile 25 - Ser 262 (Accession # [P06870-1](#)).

Predicted N-terminus: Pro 19

## Molecular Characterization

Kallikrein 1(Ile 25 - Ser 262)  
P06870-1 Poly-his

This protein carries a polyhistidine tag at the C-terminus.

The protein has a calculated MW of 28.3 kDa. The protein migrates as 39-42 kDa and 43-46 kDa when calibrated against [Star Ribbon Pre-stained Protein Marker](#) under reducing (R) condition (SDS-PAGE) due to glycosylation.

## Endotoxin

Less than 1.0 EU per  $\mu\text{g}$  by the LAL method.

## Purity

>95% as determined by SDS-PAGE.

>90% as determined by SEC-HPLC.

## Formulation

Supplied as 0.2  $\mu\text{m}$  filtered solution in 50 mM Tris, 150 mM NaCl, pH7.5 with glycerol as protectant.

Contact us for customized product form or formulation.

## Shipping

*This product is supplied and shipped with dry ice, please inquire the shipping cost.*

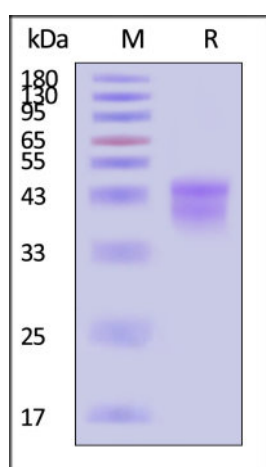
## Storage

*Please avoid repeated freeze-thaw cycles.*

This product is stable after storage at:

- The product MUST be stored at  $-70^{\circ}\text{C}$  or lower upon receipt;
- $-70^{\circ}\text{C}$  for 3 months under sterile conditions.

## SDS-PAGE

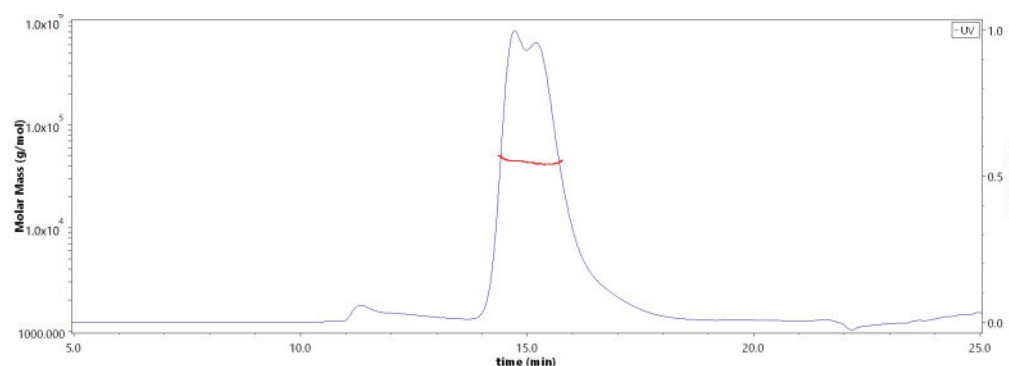


Human Kallikrein 1 (25-262) Protein, His Tag on SDS-PAGE under reducing (R) condition. The gel was stained with Coomassie Blue. The purity of the protein is greater than 95% (With [Star Ribbon Pre-stained Protein Marker](#)).

## Bioactivity

Measured by its ability to cleave a fluorescent peptide substrate Pro-Phe-Arg--7-amido-4-methylcoumarin (PFR-AMC). The specific activity is >8000 pmol/min/ $\mu\text{g}$  (QC tested).

## SEC-HPLC



The purity of Human Kallikrein 1 (25-262) Protein, His Tag (Cat. No. KL1-H52H4) was greater than 90% as determined by SEC-HPLC.

## Background

Discounts, Gifts,  
and more!



# Human Kallikrein 1 / KLK-1 (25-262) Protein, His Tag (active enzyme, HPLC verified)

Catalog # KL1-H52H4



Human Plasma Kallikrein, a serine protease, is synthesized in the liver and circulates in the plasma by binding to high molecular weight (HMW) kininogen or as a free zymogen. The enzyme cleaves Lys-Arg and Arg-Ser bonds. It activates, in a reciprocal reaction, factor XII after its binding to a negatively charged surface. It also releases bradykinin from HMW kininogen and may also play a role in the renin-angiotensin system by converting prorenin into renin.

## Clinical and Translational Updates

Discounts, Gifts,  
and more!



➤ [www.acrobiosystems.com](http://www.acrobiosystems.com)

9/10/2024