

HEK293/Human Claudin-9 Stable Cell Line Data Sheet

HEK293/Human Claudin-9 Stable Cell Line

Catalog No.	Size
CHEK-ATP139	2 × (1 vial contains ~5×10 ⁶ cells)

• Description

The HEK293/Human Claudin-9 Stable Cell Line was engineered to express full length human Claudin-9 (Gene ID: 9080). Surface expression of human Claudin-9 was confirmed by flow cytometry.

• Application

- Useful for cell-based Claudin-9 binding assay.

• Cell Line Profile

Cell line	HEK293/Human Claudin-9 Stable Cell Line
Host Cell	HEK293
Property	Adherent
Complete Growth Medium	DMEM + 10% FBS
Selection Marker	Puromycin (2 µg/mL)
Incubation	37°C with 5% CO ₂
Doubling Time	22-24 hours
Transduction Technique	Lentivirus

HEK293/Human Claudin-9 Stable Cell Line Data Sheet

• *Materials Required for Cell Culture*

- DMEM medium (Gibco, Cat. No. 11965-092)
- Fetal bovine serum (CellMax, Cat. No. SA211.02)
- Puromycin (InvivoGen, Cat. No. ant-pr-5b)
- 0.25% Trypsin-EDTA (1X), Phenol Red (Gibco, Cat. No. 25200-056)
- Penicillin-Streptomycin (Gibco, Cat. No. 15140-122)
- Phosphate Buffered Saline (1X) (HyClone, Cat. No. SH30256.01)
- Complete Growth Medium: DMEM + 10% FBS, 1% P/S
- Culture Medium: DMEM + 10% FBS, Puromycin (2 µg/mL), 1% P/S
- Freeze Medium: 90% FBS, 10% (V/V) DMSO
- T-75 Culture flask (Corning, 430641)
- Cryogenic storage vials (SARSTEDT, 72.379.007)
- Thermostat water bath
- Centrifuge
- Luna cell counter (Logos Biosystems, LUNA- II)
- CO₂ Incubator (Thermo, 3111)
- Biological Safety Cabinet (Thermo, 1389)

HEK293/Human Claudin-9 Stable Cell Line Data Sheet

• *Recovery*

1. Thaw the vial by gentle agitation in a 37°C water bath. To reduce the possibility of contamination, keep the cap out of the water. Thawing should be rapid (approximately 2 minutes).
2. Remove the vial from the water bath as soon as the contents are thawed, and decontaminate by spraying with 70% ethanol. All the operations from this point on should be carried out under strict aseptic conditions.
3. Transfer the vial contents to a centrifuge tube containing 4.0 mL complete growth medium and spin at approximately 1000 rpm for 5 minutes.
4. Resuspend cell pellet with 5 mL complete growth medium and transfer the cell suspension into T-75 flask containing 10-15 mL of pre-warmed complete growth medium.
5. Incubate at 37°C with 5% CO₂ incubator until the cells are ready to be split.

• *Subculture*

1. Remove and discard culture medium.
2. Wash the cells once with sterile PBS.
3. Add 2 mL of 0.25% trypsin to cell culture flask. Place the flask at 37°C for 2-3 minutes, until 90% of the cells have detached.
4. Add 6.0 to 8.0 mL of culture medium and aspirate cells by gently pipetting.
5. Add appropriate aliquots of the cell suspension to new culture vessel.
6. Incubate at 37°C with 5% CO₂ incubator.

Subcultivation Ratio: A subcultivation ratio of 1:8 to 1:10 is recommended.

Medium Renewal: Every 2 to 3 days.

Note: After recovery for 1-2 generations with the complete growth medium not containing the selection marker, if the cell state is well, changing to the culture medium containing the selection marker.

HEK293/Human Claudin-9 Stable Cell Line Data Sheet

• *Cryopreservation*

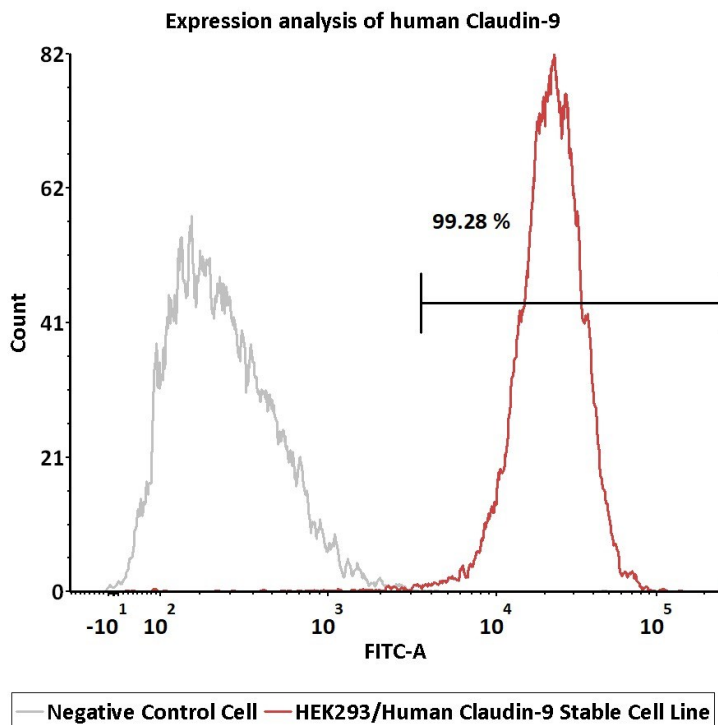
1. Remove and discard spent medium.
2. Detach cells from the cell culture flasks with 0.25% trypsin.
3. Centrifuge at 1000 rpm for 5 min at RT to pellet cells.
4. Resuspend the cell pellets with complete growth medium and count viable cells.
5. Centrifuge at 1000 rpm for 5 min at RT and resuspend cells in freezing medium to a concentration of 5×10^6 to 1×10^7 cells/mL.
6. Aliquot into cryogenic storage vials. Place vials in a programmable cooler or an insulated box placed in a -80°C freezer overnight, then transferring to liquid nitrogen storage.

• *Storage*

- **Product format:** Frozen
- **Storage conditions:** Liquid nitrogen immediately upon receipt

HEK293/Human Claudin-9 Stable Cell Line Data Sheet

• *Receptor Assay*



Catalog No.	Stable Cell Line	MFI for Claudin-9 (FITC)
NA	Negative Control Cell	245.80
CHEK-ATP139	HEK293/Human Claudin-9 Stable Cell Line	21107.28

Fig 1. Expression analysis of human Claudin-9 on HEK293/Human Claudin-9 Stable Cell Line by FACS. Cell surface staining was performed on HEK293/Human Claudin-9 Stable Cell Line or negative control cell using anti-human Claudin-9 antibody followed by staining with FITC anti-mouse IgG antibody.

HEK293/Human Claudin-9 Stable Cell Line Data Sheet

• *License Disclosure*

This reporter cell is provided for research use only. This license does not permit you to share, distribute, sell, sublicense, or otherwise make this reporter cell available for use to other laboratories, departments, research institutions, hospitals, universities, or biotech companies. The license does not permit modification of this reporter cell in any way. Inappropriate use or distribution of this reporter cell will result in revocation of the license. Modifications of this cell line, transfer to another facility, or commercial use of the cells may require a separate license and additional fees. AcroBiosystems does not warrant the suitability of this reporter cell for any particular use, and does not accept any liability in connection with the handling or use of this reporter cell.

• *Related Products*

Products

HEK293/Human CEACAM5 Stable Cell Line

HEK293/Human DLL3 Stable Cell Line

HEK293/Human ROR1 Stable Cell Line

HEK293/Human FOLR1 Stable Cell Line

HEK293/Human Glypican-3 (GPC3) Stable Cell Line

HEK293/Human TL1A Stable Cell Line

CHO/Human c-MET Stable Cell Line Development Service

CHO/Human Mesothelin Stable Cell Line Development Service

CHO/Human Glypican-3 (GPC3) Stable Line Development Service

CHO/Human STEAP1 Stable Cell Line Development Service

Cat.No.

CHEK-ATP083

CHEK-ATP090

CHEK-ATP084

CHEK-ATP091

CHEK-ATP092

CHEK-ATP142

SCCHO-ATP141

SCCHO-ATP120

SCCHO-ATP112

SCCHO-ATP121